

BWO EMERGER [TIED BY NEAL HESS]

The BWO, or Baetis, is a very important fly for the fish. Most hatches occur just before spring runoff, this hatch gives the fish the nourishment needed to withstand fast muddy water. The Emerger is the most vulnerable stage of the insect. It must let go of the security of the rocks and swim free to the surface. Here it is caught in the surface film and must pull itself free of the nymph case, this can take a while and fish find them an easy target.

TYING MATERIALS:

Hook: Larva Lace Premium Hook - LL 125 #16

Bead: Larva Lace Conehead - Gold - Large

Body: Larva lace Polar White Shimmer

Tail and legs: Saddle Hackle Olive

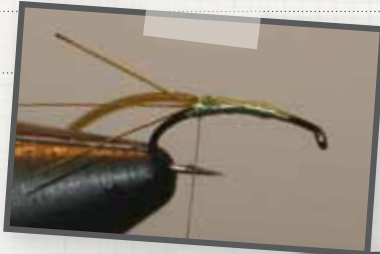
Para Hackle: Grizzly Ginger Saddle Hackle

Thorax: Lava Lace Dazzle Dubbing - Damsel Olive & Larva Lace Salmo Supreme Dubbing - Pheasant Crest Gold

Thread: FlyMaster 6/0 Olive

Head Cement: Larva Lace Flex Loc

The materials used to tie this tie can be found at: www.unexcelledfishing.com



« Step 1

Place the hook in the vise and wrap a layer of thread from the eye to the barb. Strip the barbs from three saddle hackles leaving the vanes. Trim the Larva Lace Midge Material Olive at a 45 degree angle and tie onto the hook. Tie in the Midge Material.



« Step 2

Blend a small amount of the Dazzle Dubbing - Damsel Olive and Salmo Supreme Dubbing - Pheasant Crest Gold to make Golden Olive. Dub the blend onto the thread and wrap forward just ahead of center. Wrap the lace over the dubbing and ahead of center and tie off.



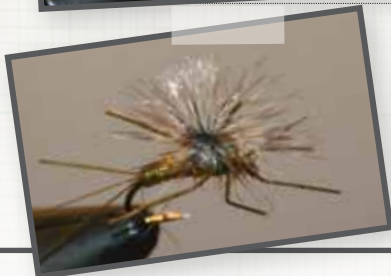
« Step 3

For the legs you will need 6 Olive Saddle Hackles, strip off the barbs leaving the vanes. Tie in the vanes forming a star pattern, for extra strength add a drop of super glue. This will help position the legs as you secure them with thread.



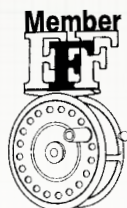
» Step 4

Dub on a small amount of the blended golden olive dubbing, crisscross the dubbing thru the legs, this will help keep them apart. Select a Ginger Grizzly Hackle and tie in at the second pair of legs. Select 25 to 30 strands of Polar White Shimmer and tie in over the Grizzly Hackle and attach the other end to a parachute tool. Wrap grizzly hackle twice around the post and tie off.



» Step 5

To shape the legs use a pair of fine tip forceps or hackle pliers. Pinch the vane where you want it to bend, fold the rest of the vane around the pliers. You may need to twist them slightly to get the proper angle. Coat the legs with Flex Loc when finished. Trim the post approximately 1/4" long. Cement the head. Reshape the legs if necessary.



Interested in hearing more about tips and tricks just like these? Be sure to sign up for our monthly E-Newsletter. Simply sign up by submitting your email address online at our website, www.unexcelledfishing.com or when you place another order.